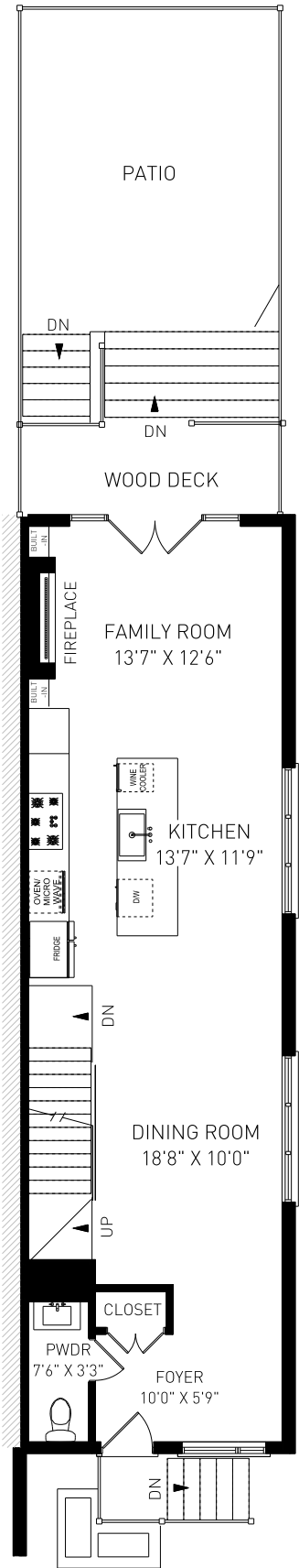
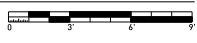


9 KINTYRE AVENUE, TORONTO

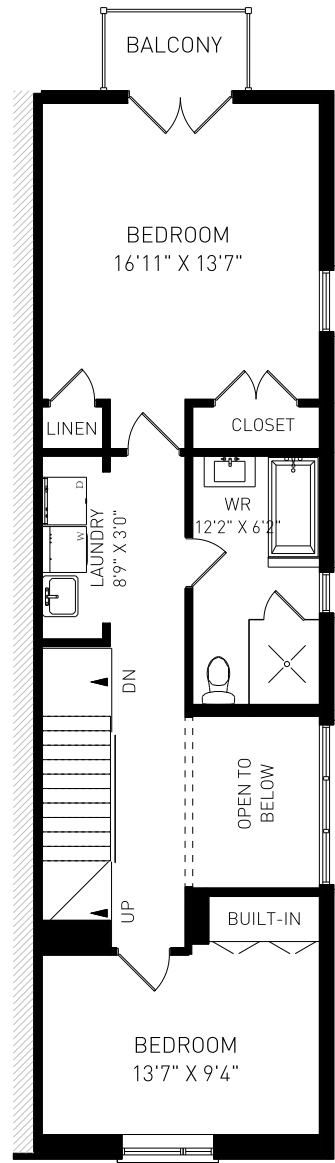
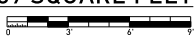


LOWER LEVEL - 739 SQUARE FEET



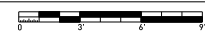
MAIN FLOOR - 739 SQUARE FEET

CEILING HEIGHT 10'0"

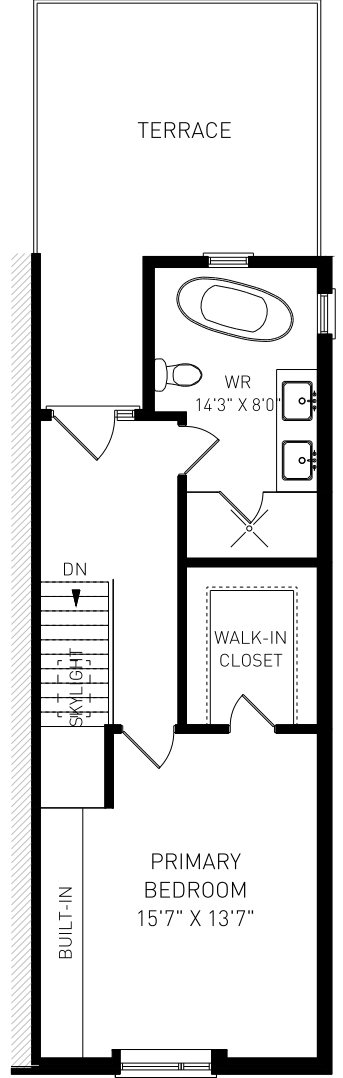


SECOND FLOOR - 712 SQUARE FEET

CEILING HEIGHT 8'3"



AREA EXCLUDES 58 SQ.FT. OPEN TO BELOW SPACE



THIRD FLOOR - 549 SQUARE FEET

CEILING HEIGHT 8'6"

